

# La Neomudéjar, a spooky, avant-garde arts center near Atocha

If you're into experimental art and transformed industrial buildings, then this is the place for you. [La Neomudéjar](#) is a rather eerie [museum](#), located behind Atocha train station. It occupies a massive building that was the former offices of Spanish railway company Adif, and was converted into an international arts center and residency five years ago.

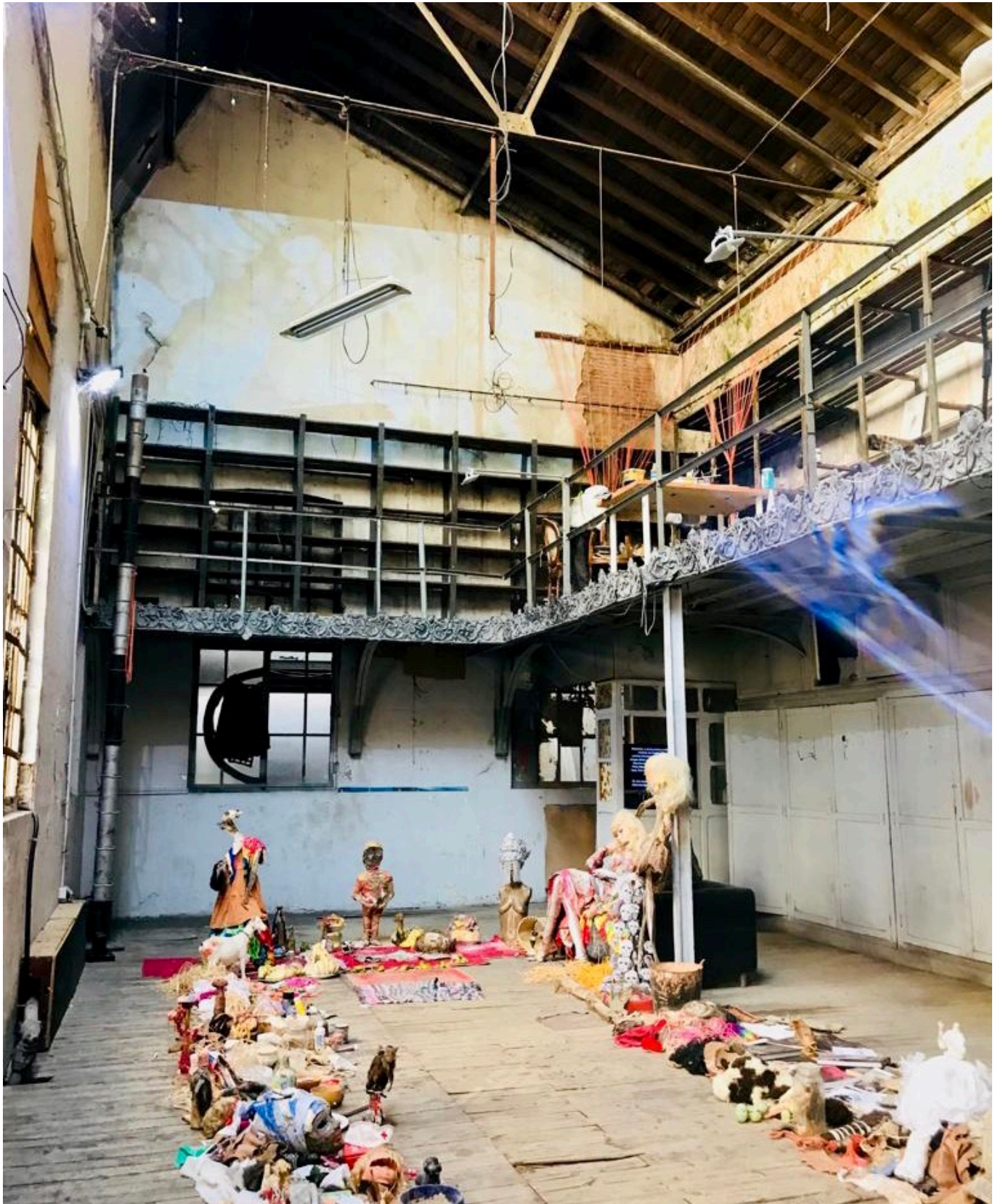


A renovation was clearly not top priority upon its reopening, as it feels like a completely abandoned old factory, taken

over by bold artists. You might even think you're in the wrong place as you enter through the unassuming gate located on a side street, just a few blocks away from Atocha.

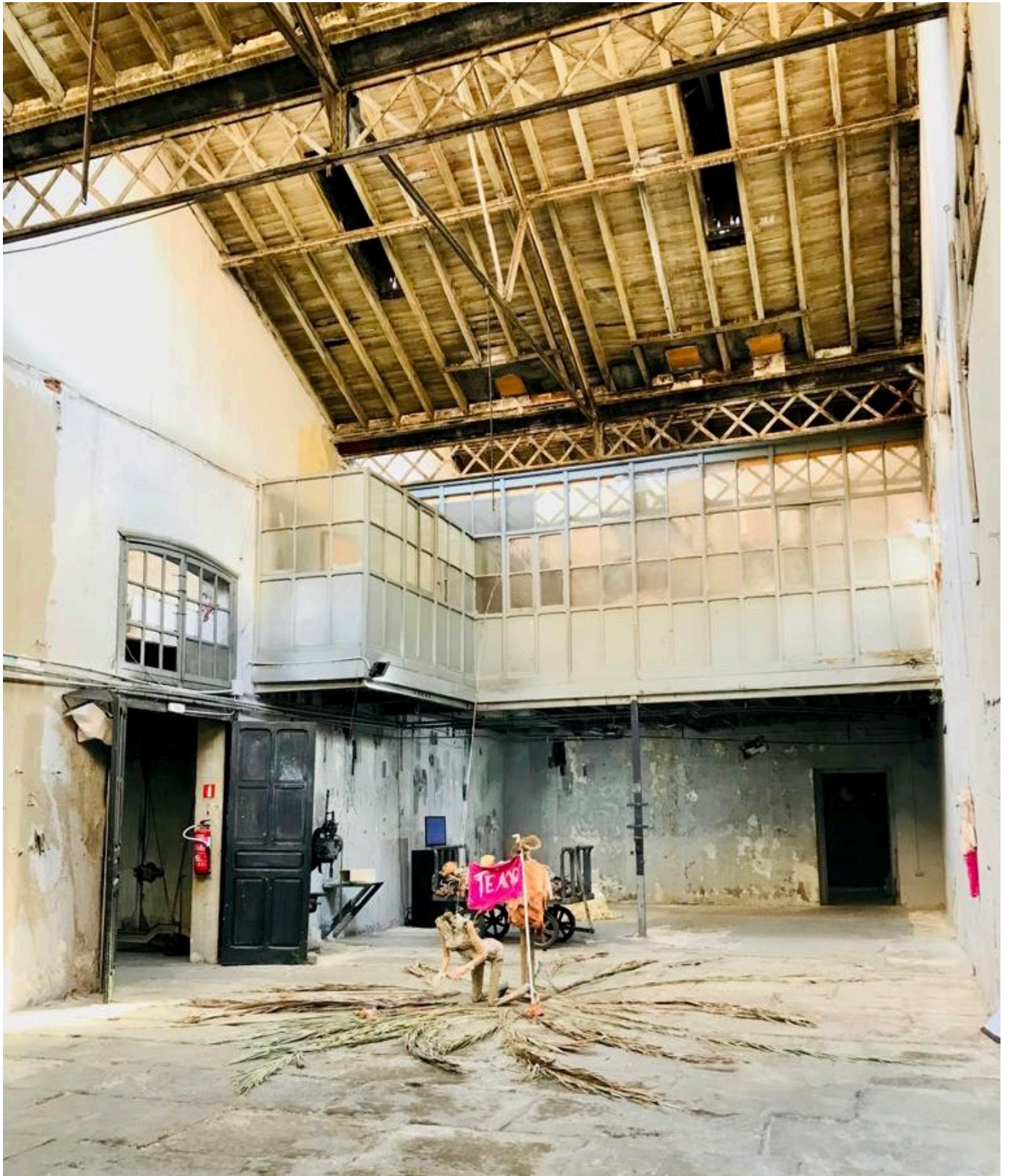
But keep walking down the little stairway and through the unadorned outdoor area with plastic tables and ashtrays, and **you'll find the main door to a unique addition to [Madrid's thriving arts scene](#), featuring art exhibits, performances, residencies and more.**





In the entrance, you'll find a gift shop with art books and other materials. Through there you'll start off in the main room where your gaze will immediately begin to scan the entire space from floor to ceiling... Both the exhibited art and the building itself are worth marvelling at.





Tiptoe around the items scattered across the floor as you look at paintings and displays with rather surprising written phrases, scenes, and messages. Continue entering through dark rooms, stained walls, and creepy corridors that lead you to dynamic art installations, film screenings and exhibits from international artists. **The current exhibit is called [Dollhouse](#)**



[by Dutch artist Fardou Keuning](#), featuring life-size dolls.



In addition to the contemporary exhibits on display, you'll



also see clear remnants of the building's former life as a railway company.



One last tip: this is a great place to take a photo for your instagram story and scare your friends.



## La Neomudéjar

- [Website](#) & [Facebook](#)
- **Address:** Calle Antonio Nebrija
- **Metro:** Menéndez Pelayo / Atocha Renfe
- **Entrance fee:** €5
- **Hours:** Wednesday-Sunday, 11am-3pm/5pm-9pm

## You may also like:

- [Madrid museums: the obvious and not-so-obvious \(and how to get in for free!\)](#)